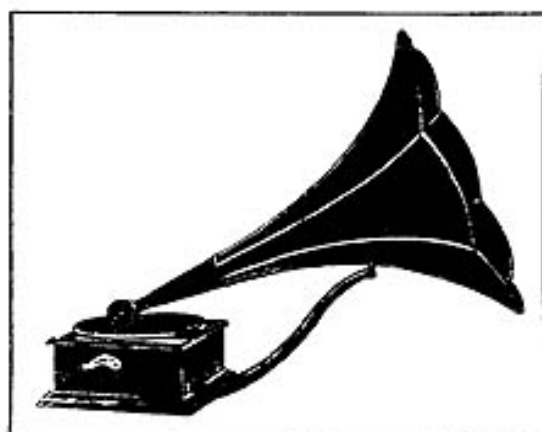


# Directions for Operating The Busy Bee Grand



**U**NPACK carefully and remove all twine and paper that may have been used to hold parts for safe transportation. Clean off any dust or particles of packing material that may adhere to the machine.

Fasten the arm which supports the horn to base of cabinet, using thumb screws that you will find with machine.

Place sound box on end of horn as far as it will go.

Attach horn to machine by placing cradle on arm which supports horn, and fastening horn to cradle, and the machine is ready to play.

In winding be careful not to wind too tight.

Use a new needle every time you play a record, as it saves wear on records.

---

**O'NEILL-JAMES COMPANY**

**OF CHICAGO**

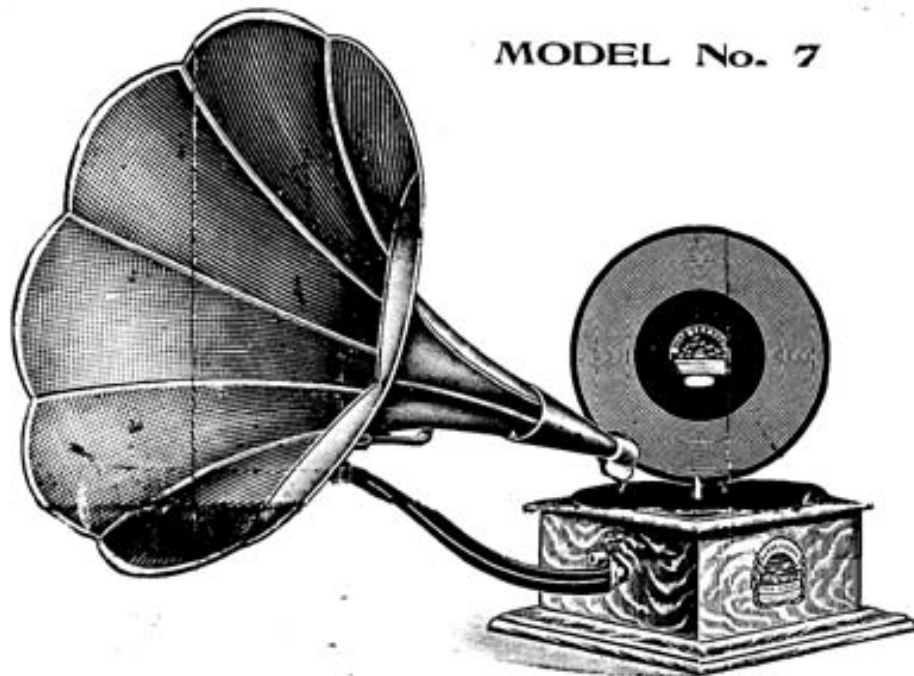
**SOLE OWNERS OF THE Busy Bee Graphophone**

for the United States and Canada

**AND HANDLED ONLY BY THEIR AUTHORIZED AGENTS**

# DIRECTIONS FOR OPERATING The Busy Bee Grand Machine

MODEL No. 7



Unpack carefully and remove all twine and paper that may have been used to hold parts for safe transportation. Clean off any dust or particles of packing material that may adhere to the machine.

Fasten the arm which supports the horn to casting on front of cabinet, using thumb screw you will find with machine.

Place sound box on end of horn as far as it will go.

Attach horn to machine by placing cradle on arm which supports horn, fasten horn to cradle, and machine is ready to play.

Use a new needle every time you play a record, it saves wear on records.

---

---

**O'NEILL-JAMES COMPANY**

**CHICAGO, ILL.**